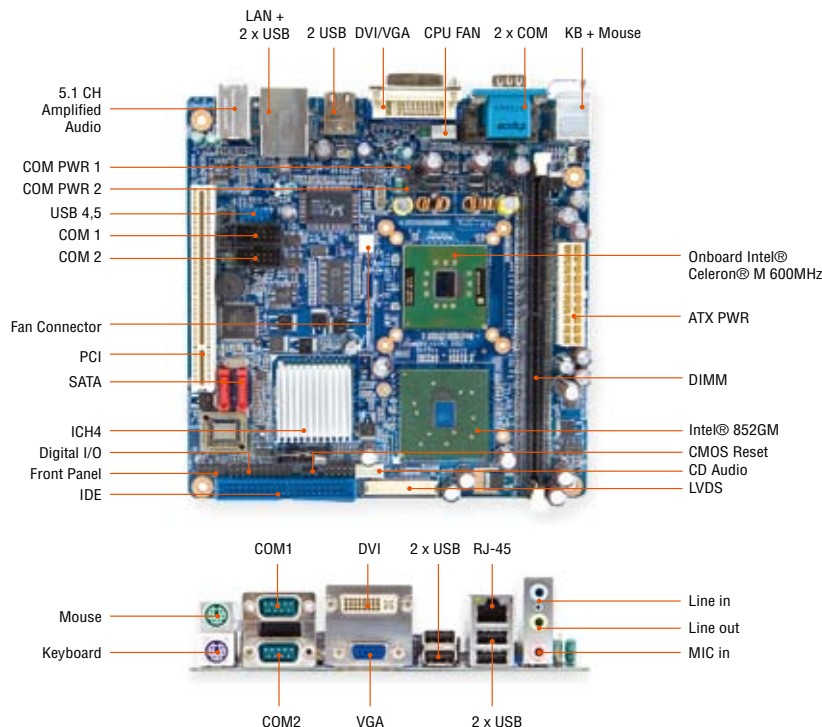


# i852GM4-DCQI

Intel® 852GM Celeron® 600 MHz Mini ITX Motherboard



## Features

- Onboard Intel® Celeron® M 600MHz w/512K 2nd Level Cache CPU
- Intel® 82852GM Chipset
- One DIMM up to 1 GB DDR 200/266 SDRAM
- DVI, 2-CH 18-bit LVDS, Dual View
- Realtek ALC655 5.1 CH Audio
- Realtek RTL8110SC Gigabit LAN
- 1 PCI (supports 3 PCI Master), CF
- 4 powered COM, 6 USB, 2 SATA, 16-bit GPIO
- TPA3005D2 5W Stereo Amplifier



## Specifications

### System

<b>CPU</b>	Onboard Intel® uFC-BGA 479 Celeron® M 600MHz w/512K 2nd Level Cache with 0.13um process technology
<b>FSB</b>	400 MHz
<b>BIOS</b>	Award 4 Mb Flash BIOS
<b>System Chipset</b>	Intel® 82852GM GMCH / 82801DB ICH4
<b>I/O Chip</b>	Winbond W83627EHG-A
<b>System Memory</b>	One 184-pin DIMM socket supports up to 1 GB DDR 200/266 SDRAM
<b>SSD</b>	One CompactFlash Type I/II socket
<b>Watchdog Timer</b>	Reset: 1 sec.~255 min. and 1 sec. or 1 min./step
<b>H/W Status Monitor</b>	Monitoring CPU temperature, voltage, and cooling fan status. Auto throttling control when CPU overheats
<b>Expansion</b>	One PCI slot (PCI Rev. 2.2 compliant) supports 3 PCI master
<b>S3</b>	S3 Support
<b>SmartFan Control</b>	Yes

### I/O

<b>MIO</b>	1 x EIDE (Ultra DMA 100), 2 x SATA, 4 x RS-232, 1 x K/B, 1 x Mouse (COM1-4 with Power output)
<b>USB</b>	6 x USB 2.0
<b>DIO</b>	16-bit General Purpose I/O for DI and DO
<b>Extra SATA Chips</b>	Silicon Image Sil 3512 supports 2 SATA at 150 MB/s

### Display

<b>Chipset</b>	Intel® 82852GM GMCH integrated Extreme Graphics 2 controller
<b>Display Memory</b>	Intel® DVM2 2.1 supports up to 64 MB video memory
<b>Resolution</b>	CRT mode: 1600 x 1200 @ 32 bpp (85 Hz) LCD/Simultaneous mode: 1600 x 1200 @ 32 bpp (85 Hz)
<b>Dual Display</b>	CRT + LVDS, or CRT + DVI
<b>LVDS</b>	Intel® 852GM supports dual-channel 18-bit LVDS
<b>DVI</b>	Chrontel CH7301 DVI transmitter up to 135M pixels/second

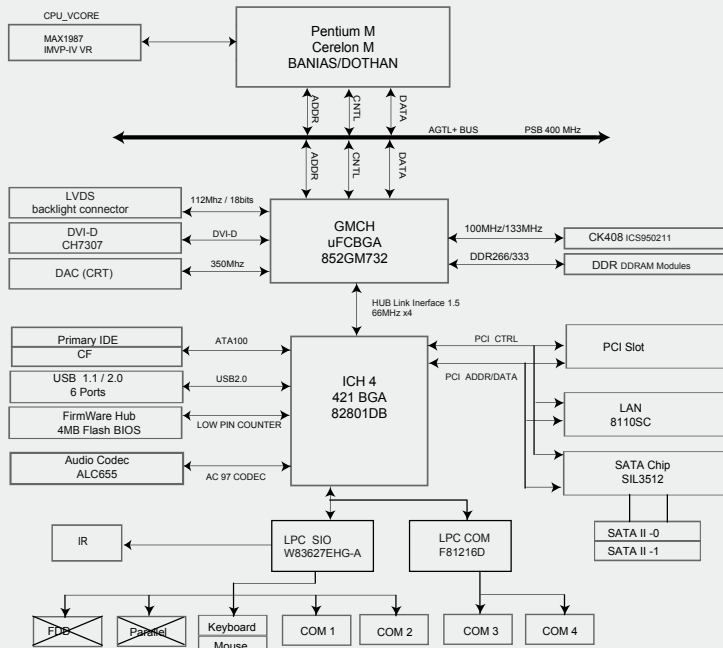
### Audio

<b>Chipset</b>	Intel® 82801DB ICH4
<b>Audio Codec</b>	Realtek ALC655 supports 5.1 CH Audio ( 3 jacks )
<b>Audio Interface</b>	Mic in, Line in, Line out
<b>Audio Amplifier</b>	TPA3005D2 5W (per front channel) stereo amplifier

### Ethernet

<b>LAN 1</b>	Realtek RTL8110SC Gigabit Ethernet Controller
--------------	---

## Block Diagram



## Ordering information

### i852GM4-DCQIC6

Intel® Celeron® M 600 Mini ITX Motherboard with VGA, 2 x 18-bit LVDS, Audio, Giga LAN, 4 powered COM, 6 USB, 2 SATA, 1 eSATA, 1 PCI, CF & 5w audio amplifier

### Packing list

<b>80I-852GM4-100000</b>	i852GM4-DCQI Mini-ITX Motherboard	1
<b>14G000020095</b>	COM1 cable 9P, WO/bracket 26cm	2
<b>14GS0000021Y09</b>	Cable 40P 300mm IDE YCW-11996	1
<b>14G000100910</b>	SATA Cable Kit (SATA/POWER)	2

### Back Panel I/O Port

- 1 x PS/2 Keyboard
- 1 x PS/2 Mouse
- 2 x RS-232 (with 5V/12V output)
- 1 x VGA port
- 1 x DVI port
- 4 x USB 2.0/1.1
- 1 x RJ45 Port
- Audio I/O (3 jacks)

### Internal I/O Connector

- 1 x USB connector supports 2 USB ports
- 1 x 20-pin ATX Power connector
- 1 x IDE 40-pin connector for two devices
- 2 x COM port header (with 5V/12V output)
- 2 x SATA connectors
- 1 x Front panel audio connector
- 1 x Audio amplifier connector
- 1 x System panel connector
- 1 x LVDS connector
- 1 x Inverter Power connector
- 1 x CPU Fan connector
- 1 x System Fan connector
- 1 x Digital IO header

### Mechanical & Environmental

<b>Power Type</b>	ATX
<b>Operating Temperature</b>	0~60°C (32~140°F)
<b>Operating Humidity</b>	0%~90% relative humidity, non-condensing
<b>Size (L x W)</b>	6.69" x 6.69" (170 mm x 170 mm)
<b>Weight</b>	0.88 lbs (0.4 Kg)

### Avalue Technology Inc.

#### US Headquarters

200 Tornillo Way, Suite 210  
 Tinton Falls, NJ 07712  
 Tel: (732) 578-0200  
 Fax: (732) 578-0250  
 E-mail sales@avalue-usa.com